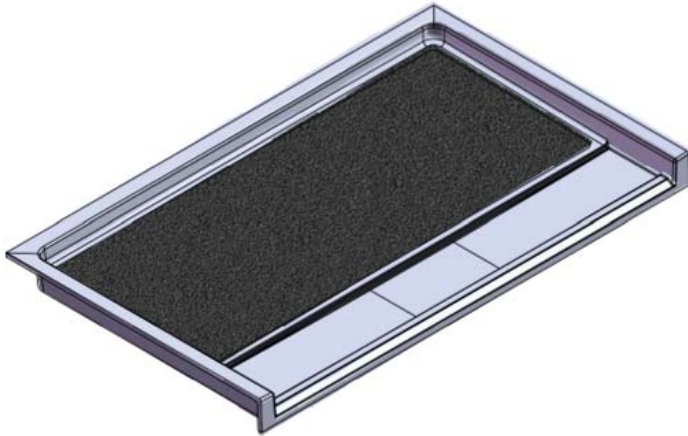


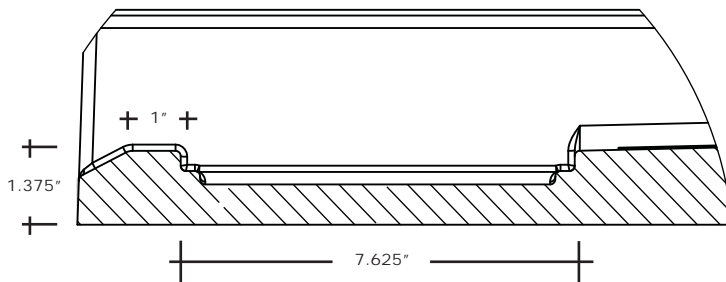
# MERIDIAN SOLID SURFACE ONE-PIECE SHOWER BASE

Model # MSB6153675STVF

61.5 x 36.75  
Accessible  
Front Trench Drain

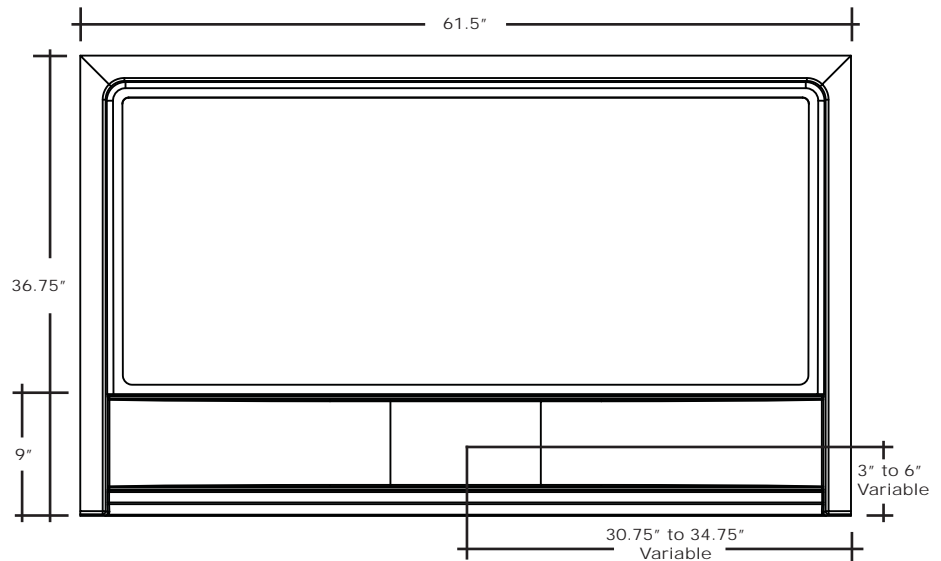
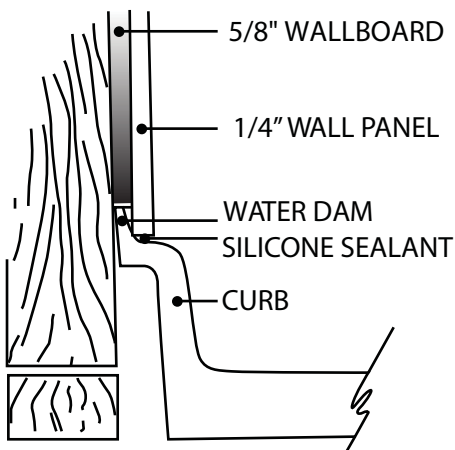


**Threshold Detail**



- Integral shower floor and threshold for alcove installation
- Variable drain location with stainless steel trench cover
- Choose from a variety of solid colors and granite-patterned colors
- Textured flooring helps prevent slipping
- Tapered floor helps water flow to drain
- Rigid water barrier integrated into base
- Uses standard 2" NPS strainer assembly
- Certified by Home Innovation Research Labs to the harmonized CSA B45.5/IAPMO Z124
- Approved by the Massachusetts Board of Examiners of Plumbers and Gasfitters

**Section Thru Waterdam**



**Special Note:**

- Interpretation and enforcement of ADA guidelines varies from state to state. Please consult with your local enforcement agency prior to specifying or purchasing this product.

